

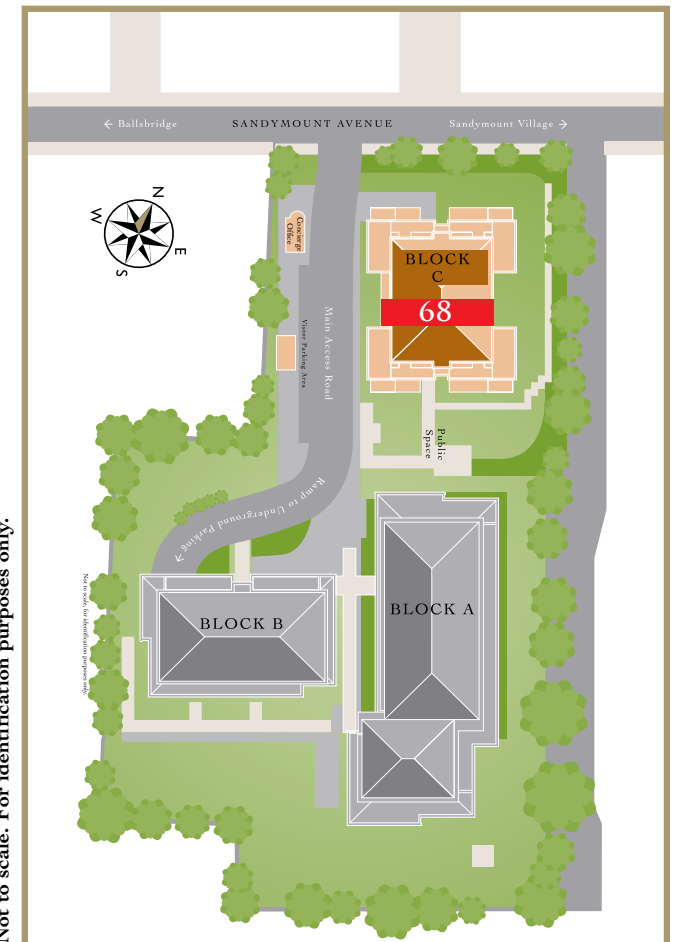
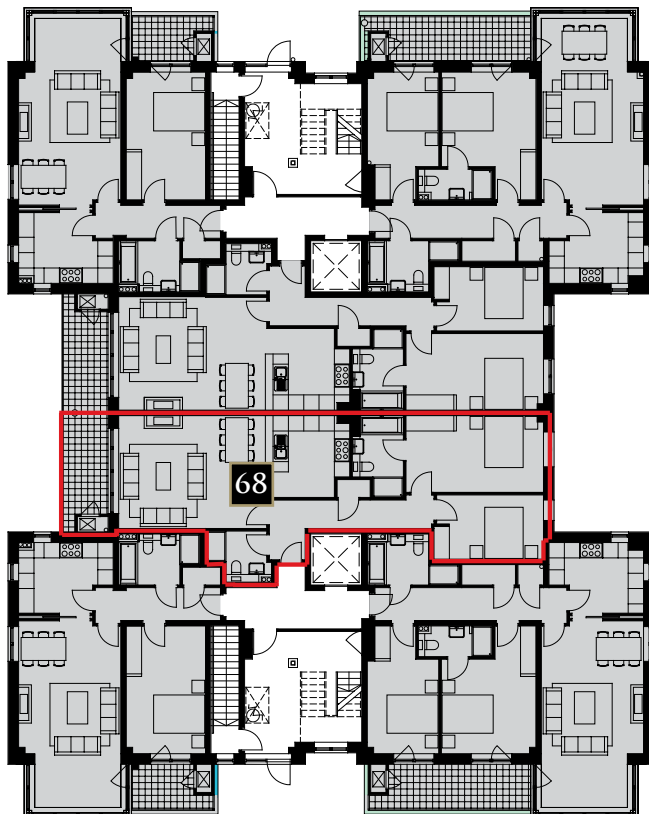
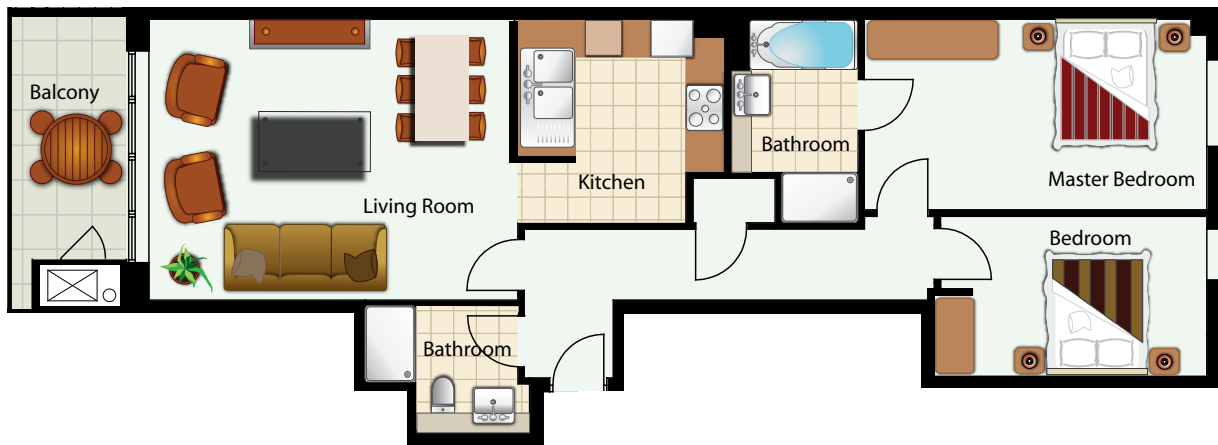
# APARTMENT 68, BLOCK C SHREWSBURY SQUARE

2 Bedroom, Second Floor Apartment, c. 85 sq.m. (914 sq.ft.)



SHREWSBURY  
SQUARE

BALLSBRIDGE DUBLIN 4



Not to scale. For identification purposes only.

## Specification for Apartment 68 Shrewsbury Square:

### ENTRANCE HALL

- Luxurious Crema Marfil Alicante marble stone floors.
- Built-in storage closet.

### LIVING ROOM

- Velvet cut pile 100% wool carpet.
- Wired for Media Centric home entertainment system through the apartment.
- Stylish gas fire.
- Wired for projector & screen.

### KITCHEN

- State-of-the-art SieMatic kitchen featuring many unique storage solutions in a range of floor and eye level units.
- SieMatic design marble stone worktop.
- Gaggenau built-in appliances: dishwasher, 6 ring gas hob, fridge/freezer.
- Küppersbusch washer/dryer, microwave, double oven.
- Gaggenau extractor fan and coffee maker.

### MASTER BEDROOM

- Velvet Cut Pile 100% wool carpet.
- Custom designed Italian styled wardrobes.
- TV and media connection point.

### ENSUITE

- Villeroy & Boch bathtub and fittings.
- Crema Marfil Alicante marble stone wall and floor tiles.
- Separate shower unit with Hans Grohe shower accessories.
- Zehnder Toga heated towel rail.
- Villeroy & Boch wash hand basin & fittings sitting on a custom made furniture cabinet.
- Underfloor heating.

### SECOND BEDROOM

- Velvet Cut Pile 100% wool carpet.
- Custom designed Italian styled wardrobes.
- TV and media connection point.

### MAIN BATHROOM

- Shower unit with frameless glass shower doors.
- Luxurious Crema Marfil Alicante marble stone walls and floors.
- Hans Grohe shower accessories.
- Villeroy & Boch wash hand basin & fittings.
- Underfloor heating.



## ACCESSORIES

### Doors:

- 2.3m high solid cherrywood with detailed inlay.
- Ensuite door, cherrywood with glazed panel.
- All doors complete with architectural ironmongery and glass door knobs.

### Heating:

- State-of-the-art gas fired central heating system.

### Windows:

- Dansk composite maintenance-free double glazed windows, with powder coated aluminium exterior and painted timber framed interior.

### Internal Lighting:

- Recessed spot lighting throughout the apartment.

### Balconies:

- Feature frameless balconies incorporating laminated glass with stainless steel handrails.
- An external water tap for gardening and cleaning is located on the balcony.
- An electrical external waterproof socket for DIY is located on the balcony.
- Gas boiler for heating system located in additional storage area off balcony.

### Storage:

- Additional storage facility located adjacent to designated underground car parking space.

### Security:

- Electronically controlled security gates leading to secure underground car park, also accessible by lifts from each apartment block.
- Video intercom entry system.
- Wired for burglar alarm system.
- Direct line to Concierge Office.

### Structural Guarantee:

- Covered by 'HomeBond' 10 Year Structural Guarantee.

### Individual Features:

- This apartment is dual aspect with the living room and balcony facing west.
- Stylish fireplace featuring log effect gas fire.



Developer



Marketing Suite



**667 5026**

Joint Agents



**491 2600**



**631 8402**

**DISCLAIMER:** Douglas Newman Good, Hooke and MacDonald, and WPP Developments for themselves and for the vendors or lessors of the property whose agents they are, give notice that (i) The particulars are set out as a general outline for the guidance of intending purchasers or lessors, and do not constitute part of an offer or contract (ii) All descriptions, dimensions, references to condition and necessary permissions for use and occupation, and other details are given in good faith and are believed to be correct, but any intending purchasers or tenants should not rely on them as statements or representations of fact but must satisfy themselves or otherwise as to the correctness of each of them. (iii) No person in the employment of Messers Douglas Newman Good, Hooke and MacDonald, or WPP Developments has any authority to make or give representation or warranty to whatever in relation to this development.